

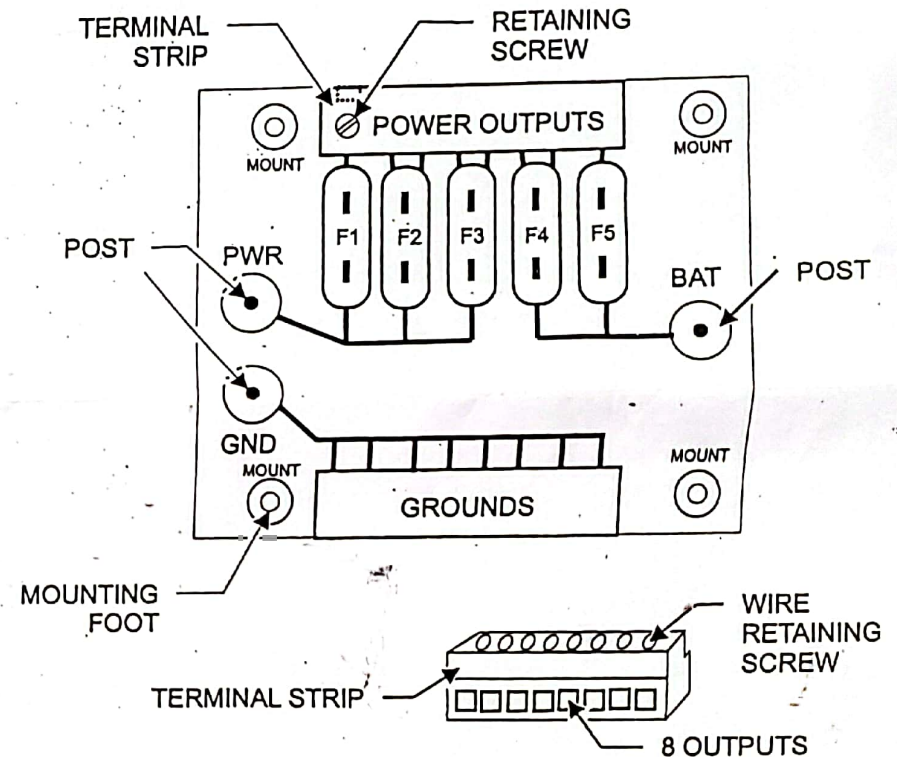
STANDARD INSTALLATION

1. Remove the top cover from the AP-2 and mount the unit using screws through the four stainless steel mounting feet.
2. Attach a 12 gauge or heavier power wire between the **PWR** post and the current source (normally your battery (+) post or Ignition switch) to feed fuses F1, F2 and F3. Use a fusible link or Maxi-Fuse at the battery post. Use the heavy duty ring terminal provided. Solder and heat shrink all connections. A second power wire can be attached to the **BAT** post to feed power to fuses F4 and F5.
3. Attach a 12 gauge or heavier ground wire between the **GND** post on the AP-2 and your battery (-) post or frame. Use the heavy duty ring terminal provided.
4. Attach all positive power wires from your appliances to the power output terminal strip. Note that fuses F1, F2 and F3 feed five outputs on the terminal strip while F4 and F5 feed three outputs. This is done by stripping off 1/8" of insulation from the wire and inserting the bare wire into the opening of the terminal strip. Use a small screwdriver to tighten the retaining screw above the wire in the terminal strip.
5. Attach all ground wires from your appliances to the ground terminal strip.
6. After wiring and testing of your circuits, re-install the top cover on the AP-2 fuse panel.

HINTS: Each terminal strip opening can accept up to a 12 gauge wire. Use the metal traces between the fuses and the terminal strip as a guide to indicate which fuse feeds which terminal strip opening. Any terminal on the "ground" terminal strip can be used with any fuse.

WARNING: The AP-2 can handle a maximum of 60 AMPERES. Select the proper fuses as required by your needs. Fuse ratings are selected by the wire size being protected. Thin wires need low amperage fuses while heavy wires can use heavier fuses. Use 3 to 7.5A with thin wires and up to 30 A for very heavy wires.

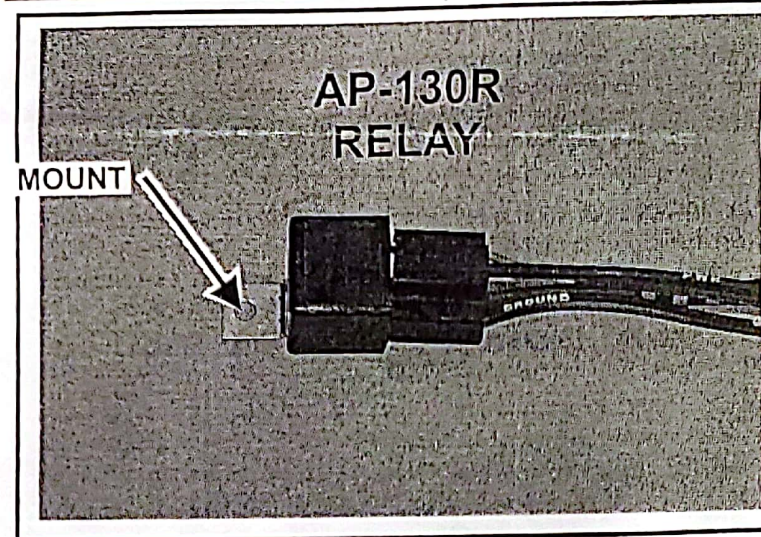
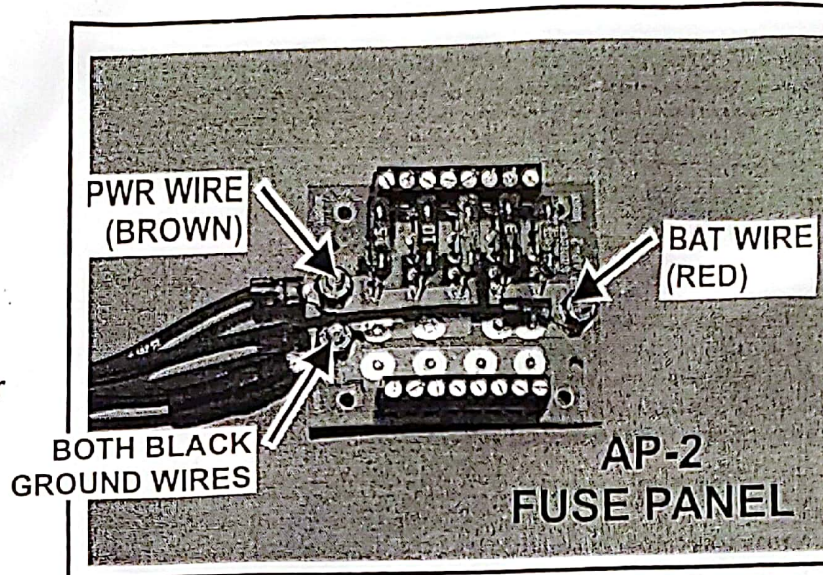
When using the Centech AP-130R relay with the AP-2, after mounting the AP-2, follow the AP-130 instructions to wire the fuse panel to the power relay.

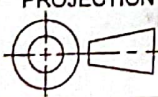


DRAWN JRS	DATE x	THIRD ANGLE PROJECTION	<i>Centech, Inc</i> 2190 Colflesh Rd Perkasie, PA 18074
CHECKED X	DATE X		
APPROVED X	DATE X		
AP-2 Installation			
THIS DOCUMENT CONTAINS PROPRIETARY INFORMATION AND CANNOT BE USED WITHOUT THE PERMISSION OF Centech, Inc.			
PAGE 1 OF 1	special	REV 0	

AP-130R WIRING

1. Mount the AP-2 fuse panel in a convenient location as you will be connecting your electrical devices to the panel as needed. See AP-2 instructions.
2. Mount the AP-130R relay between your battery and the AP-2 panel. The closer to your battery the better. You can use a sheet metal screw or a standard machine screw (preferably stainless steel).
3. Locate the thin red BAT wire from the relay. Use a ring terminal to connect it to the BAT POST on the AP-2
4. Locate the heavy black GND wire from this kit. Temporarily place the ring terminal attached to this wire over the GND stud on the AP-2.
5. Locate the thin black GROUND wire from the relay. Run this wire over to the AP-2 GND stud. Shorten this wire and install a ring terminal. Place this wire on top of the heavy GND wire on the "GND" stud. Use a stainless steel nut to fasten both "ground" wires to the AP-2. Tighten securely. Connect the heavy black GND wire directly to the negative post of your battery. Shorten as needed.
6. Locate the brown PWR wire from the relay. Use a ring terminal and stainless nut to connect it to the PWR stud on the AP-2 panel. Shorten as needed. Tighten securely. This wire has power when the relay is activated.
7. Locate the orange TRIGGER wire from the relay. Splice this wire to an any electrical wire in your stock harness which has power when the ignition key is "ON". This could be a tail lamp etc. This wire activates the relay.
8. Locate the red BATTERY+ wire from the relay. Attach it to your battery (+) post. Note: if this wire is longer than 12", it is recommended that you use an 18 gauge fuse link at the battery post to protect against fire.
9. Test operation.



DRAWN JRS	DATE X	THIRD ANGLE PROJECTION 	<i>Centech, Inc</i> 2190 Colflesh Rd Perkiomenville, PA 18074
CHECKED X	DATE X		
APPROVED X	DATE X		

AP-130R Power Relay Installation

THIS DOCUMENT CONTAINS PROPRIETARY INFORMATION AND CANNOT BE USED WITHOUT THE PERMISSION OF Centech, Inc.